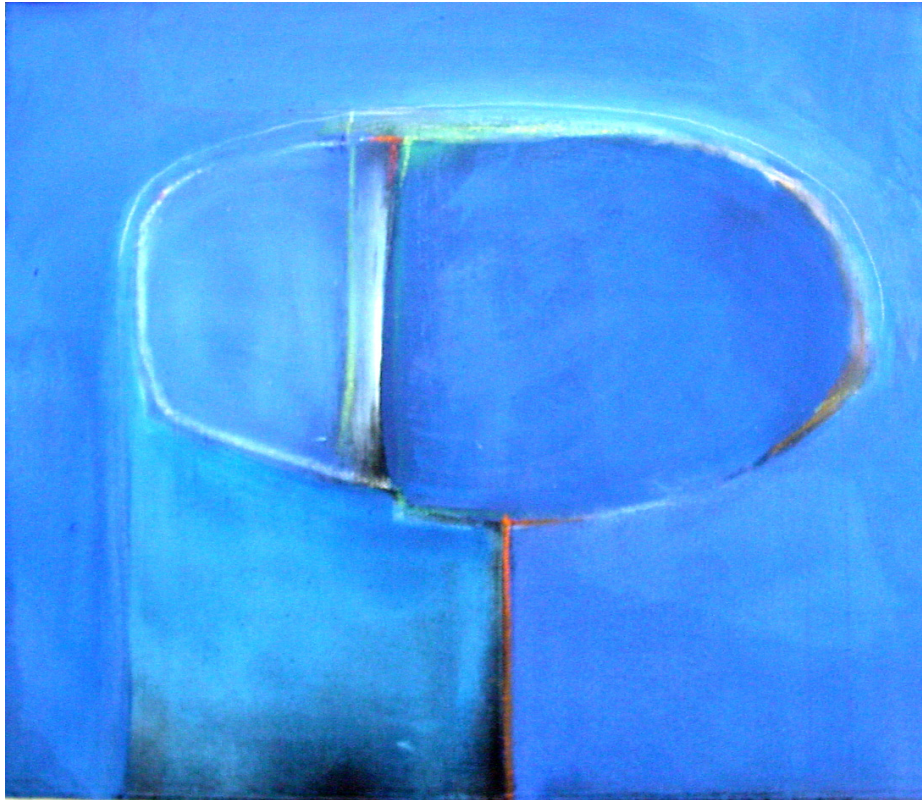


SANDRA LEHNIS

blue

2004



blue  
acrylics on canvas  
35 x 40 cm  
2004

## **blue**

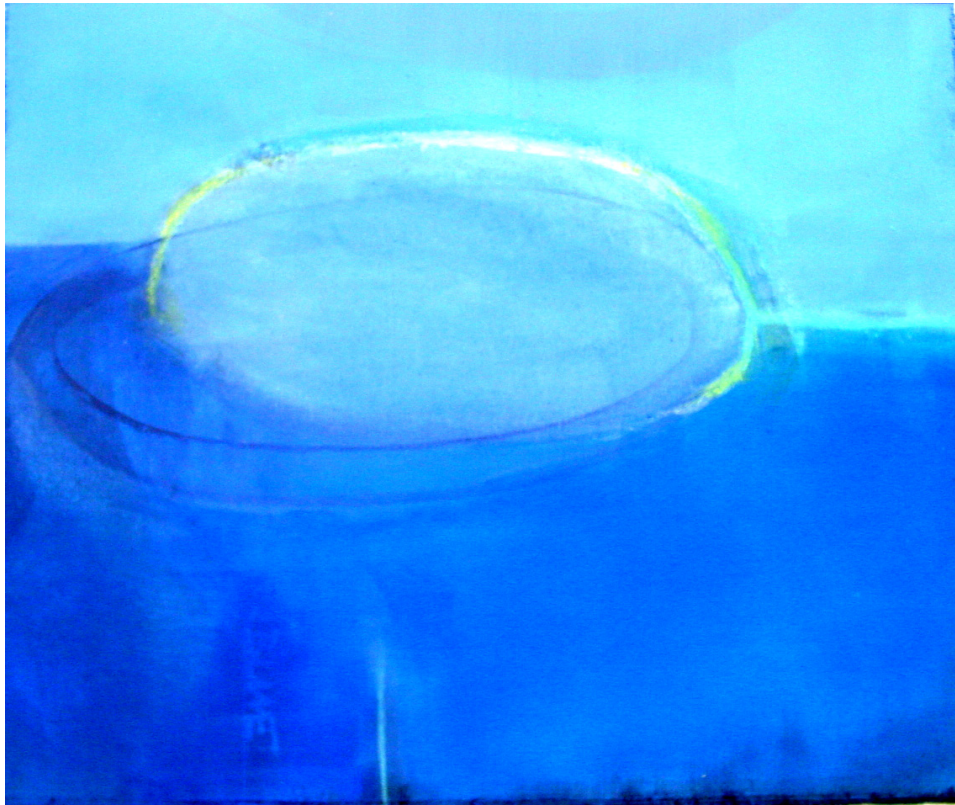
The exhibition Blue at the Moor Gallery in Mountain View / San Francisco, U.S.A. was the inspiration for this series.

Having never worked exclusively with blue until then, I wanted to dedicate myself entirely to this colour. In doing so, I discovered that blue conveys above all a sense of depth and freshness, of purity, calm and trust — a colour that is spiritual and subtle in nature.

Birth Membranes was the result.



blue  
acrylics on canvas  
50 x 40 cm  
2004



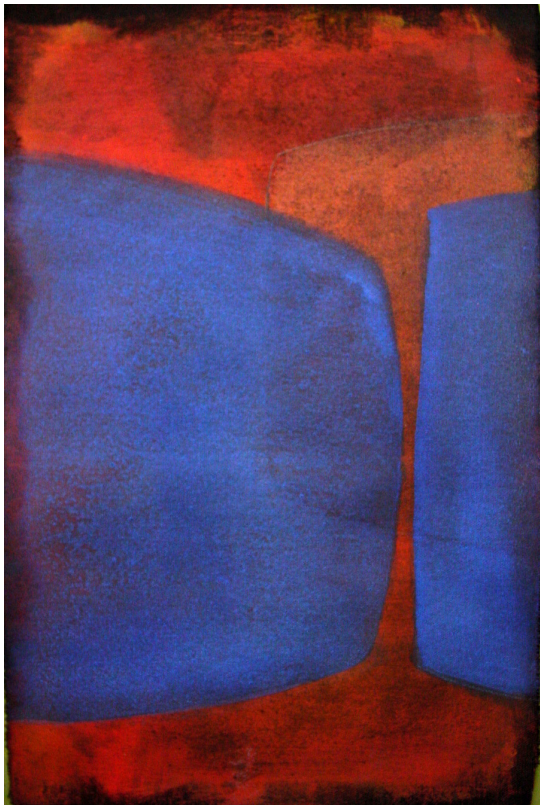
blue  
acrylics on canvas  
35 x 40 cm  
2004



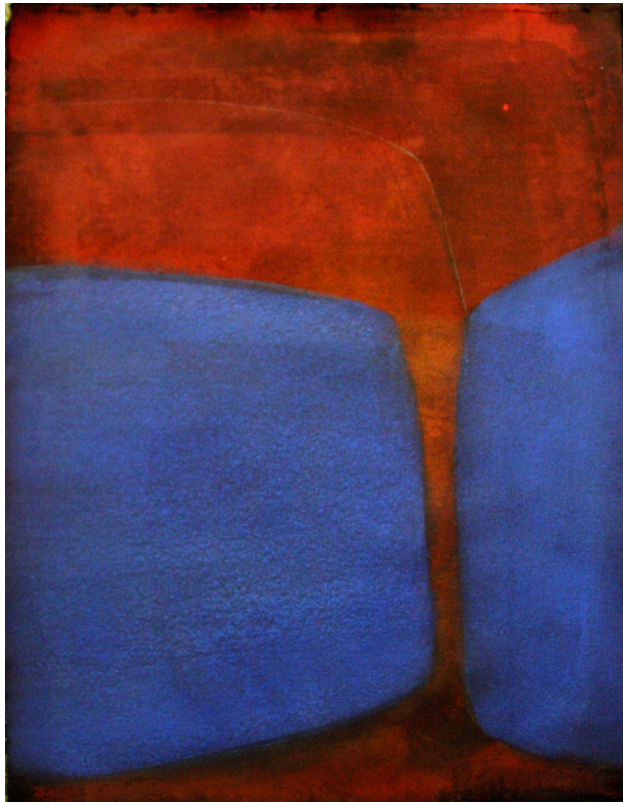
blue  
acrylics on canvas  
35 x 40 cm  
2004



blue  
acrylics on canvas  
50 x 40 cm  
2004



blue  
acrylics on canvas  
je 40 x 25 cm 2004



blue  
acrylics on canvas  
40 x 25 cm  
2004