

SANDRA LEHNIS

animus mundi

2006 - 2007

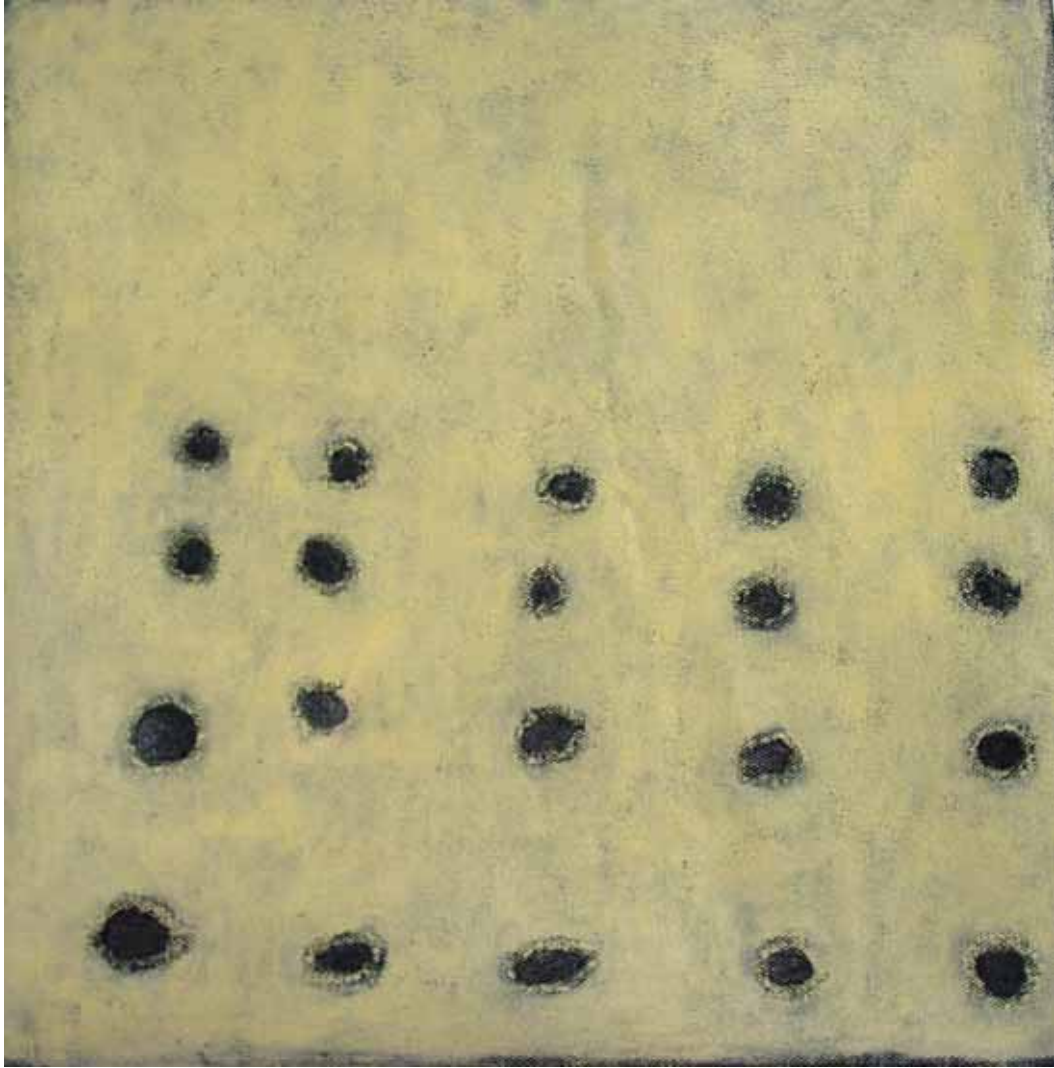


' animus mundi '
acrylic on canvas
30 x 30 cm
Alaró / Mallorca 2005

' animus mundi '

The rhythm of the endless almond and olive tree fields in Mallorca composes 'animus mundi'.

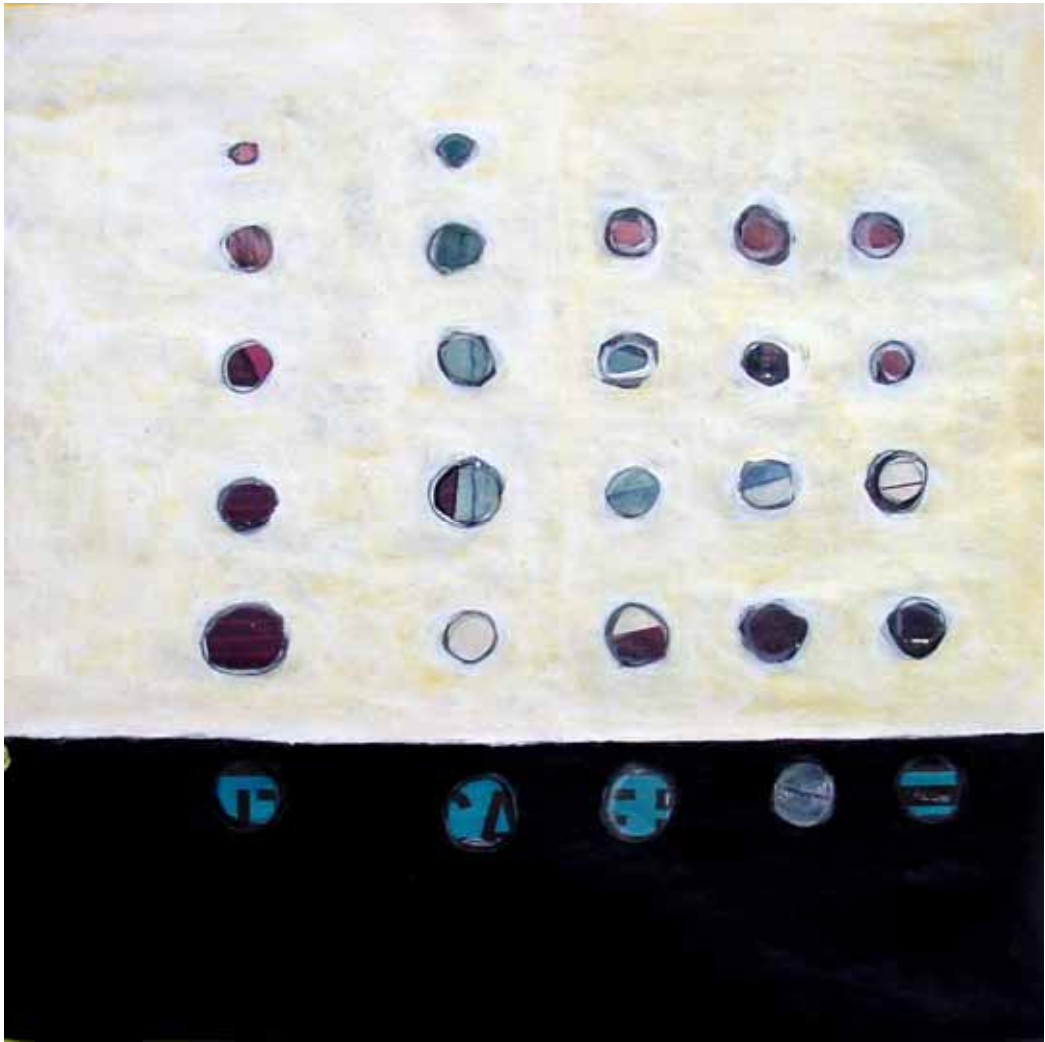
The space in between the soil and the crown of the tree has caught my interest. It is where the invisible happens. To make this circumstance viewable is my objective. The rhythm and the site of each tree – pictured by circles and trunks – is a doorway to this topic.



' animus mundi '
acrylic on canvas
30 x 30 cm
Alaró / Mallorca 2005



' animus mundi '
acrylic on canvas
30 x 30 cm
Alaró / Mallorca 2005



' animus mundi '
acrylic on paper
30 x 30 cm
Alaró / Mallorca 2005



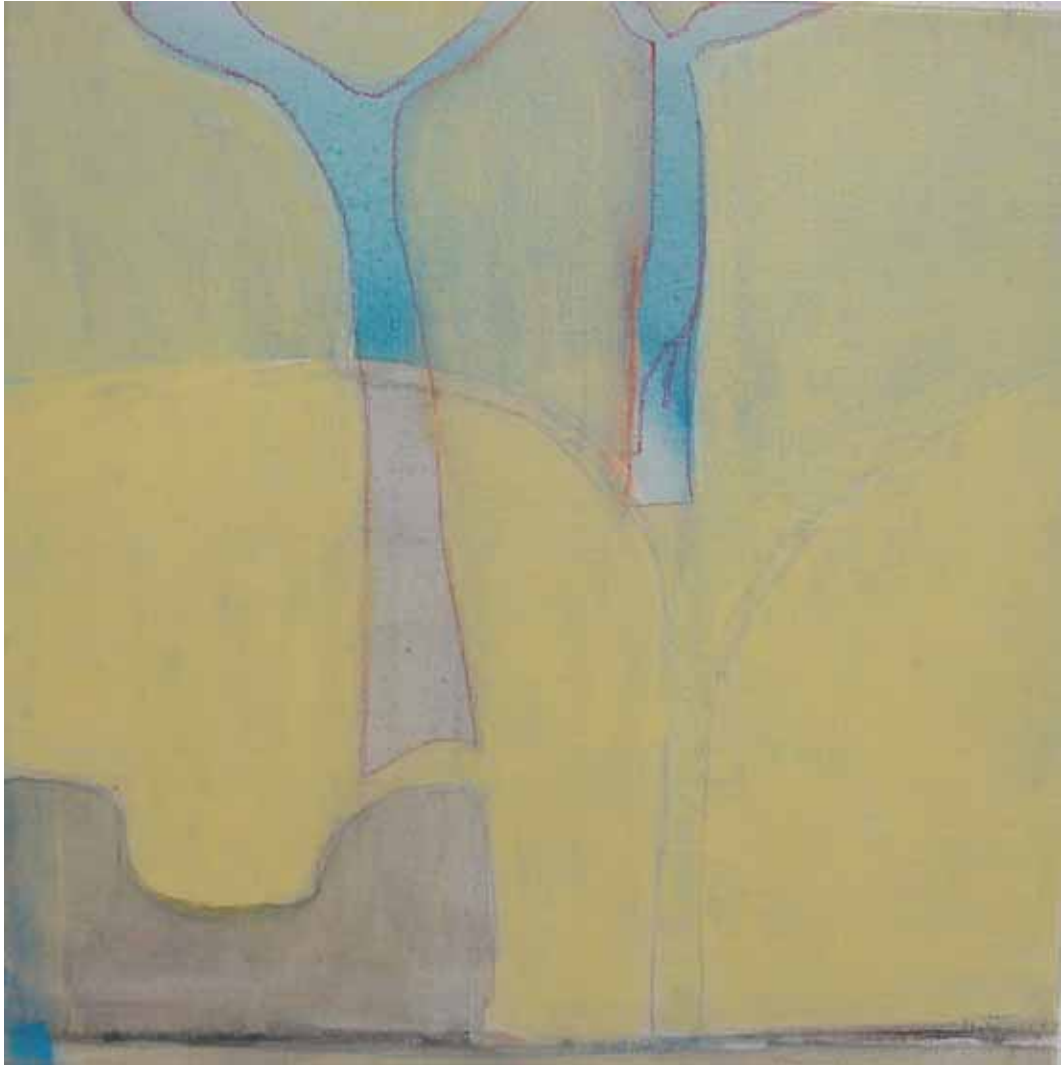
' animus mundi '
acrylic on paper
21 x 66 cm
Alaró / Mallorca 2005



' animus mundi '
acrylic on canvas
30 x 30 cm
Alaró / Mallorca 2005



' animus mundi '
acrylic on canvas
30 x 30 cm
Alaró / Mallorca 2006



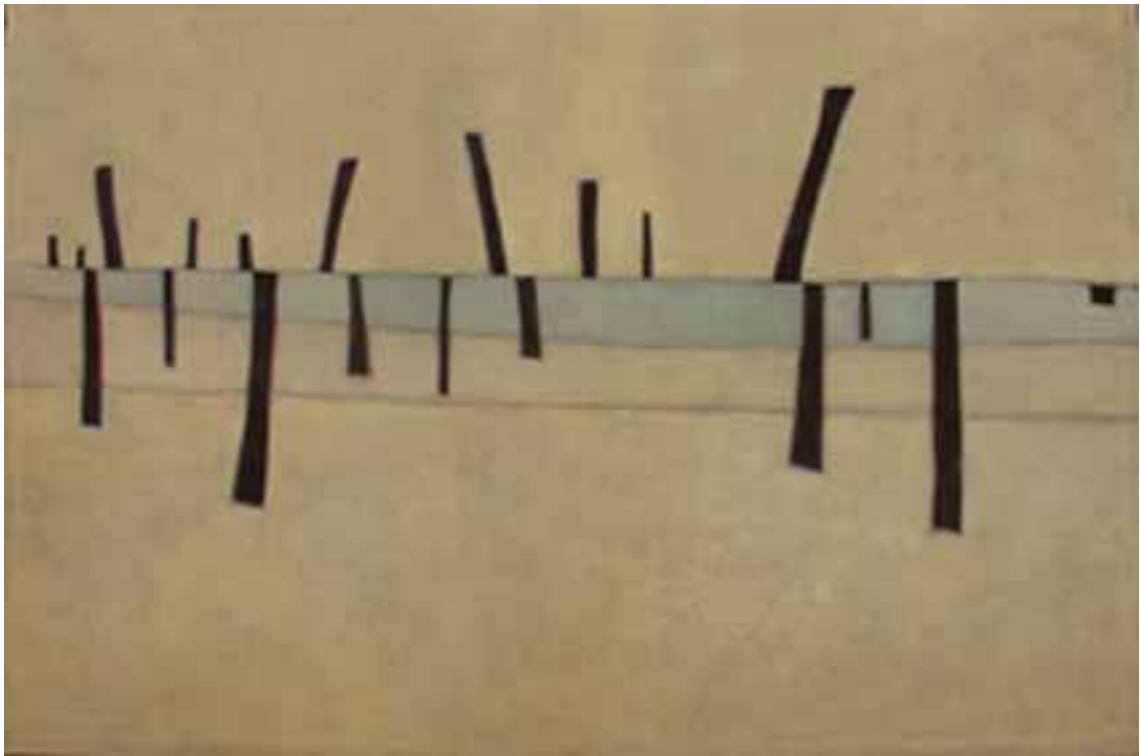
' animus mundi '
acrylic on canvas
30 x 30 cm
Alaró / Mallorca 2005



' animus mundi '
acrylic on canvas
30 x 30 cm
Alaró / Mallorca 2007



'animus mundi'
acrylic on canvas
60 x 120 cm
Alaró / Mallorca 2006



' animus mundi '
acrylic on canvas
130 x 195 cm
Alaró / Mallorca 2006



'animus mundi'
acrylic on canvas
41 x 195 cm
Alaró / Mallorca 2007



'animus mundi'
acrylic on canvas
16 x 27 cm
Alaró / Mallorca 2007

